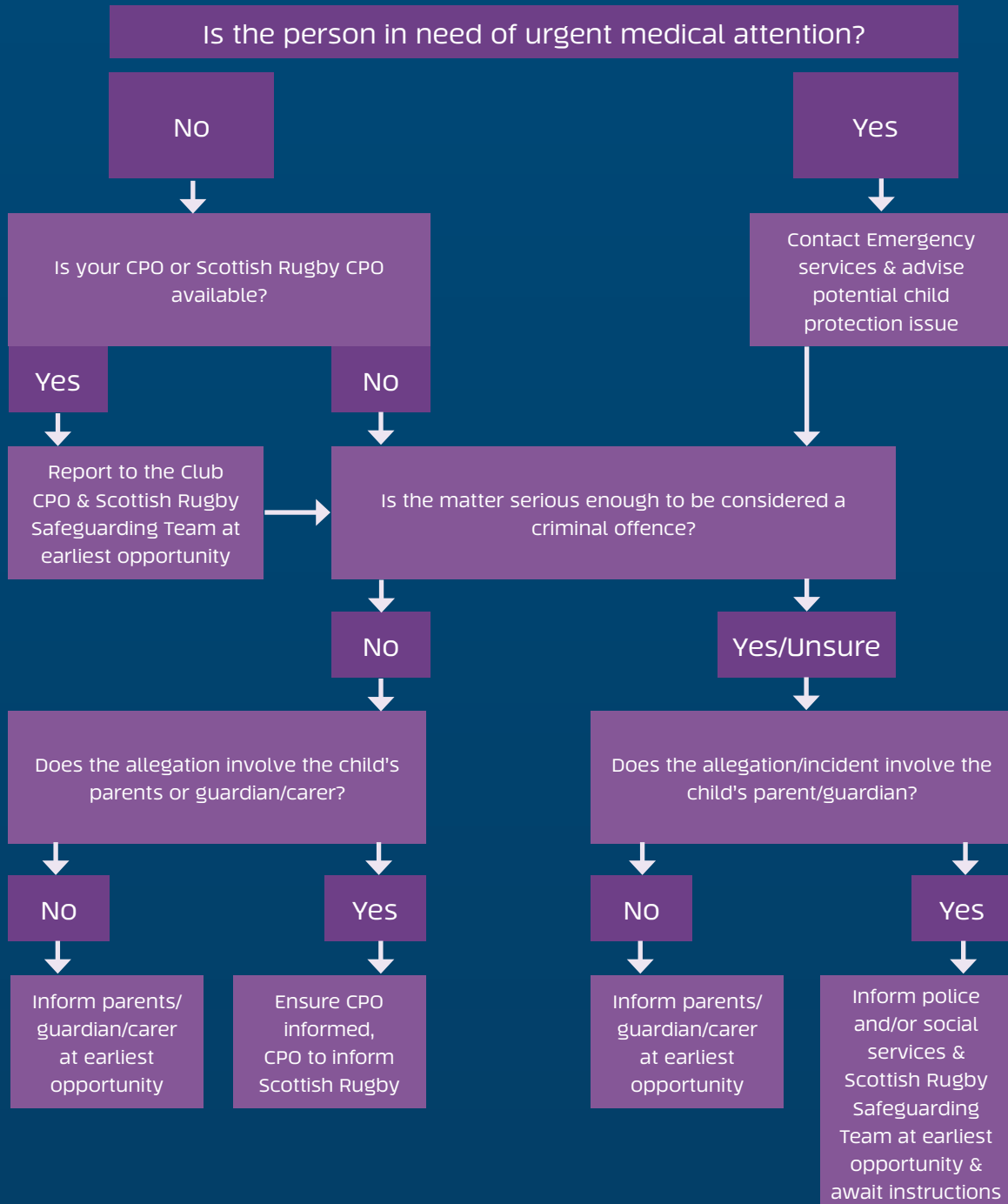


# Responding to Concerns

A child has disclosed concerning information to you OR you have witnessed or had reported to you an incident or complaint involving the behaviour of an adult in relation to a child, which may be considered abuse or poor practice.



Whatever the circumstances, a written report, preferably using the Scottish Rugby "Report a Concern" form should be submitted to [safeguarding@sru.org.uk](mailto:safeguarding@sru.org.uk) as soon as possible.